

ZWCAD

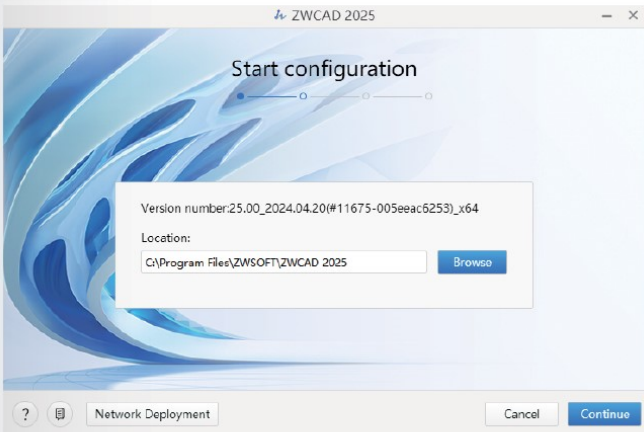
# ZWCAD 2025 Quick Start Guide



## System Requirements

	Minimum System Requirements	Recommended System Requirements
<b>Operating System</b>	<p>Microsoft® Windows 7 SP1</p> <p>Microsoft® Windows Server 2008 R2 SP1 and above</p> <p>Microsoft® Windows Server 2012</p> <p>Microsoft® Windows Server 2016</p> <p>Microsoft® Windows 8.1</p> <p>Microsoft® Windows 10</p> <p>Microsoft® Windows 11</p>	<p>Microsoft® Windows 10</p> <p>Microsoft® Windows 11</p>
<b>Processor</b>	Intel® Pentium™ 4 1.5 GHz or equivalent AMD® processor	Intel® Core™ i5-10400 or AMD® Ryzen™ 5 3600 CPU or higher
<b>RAM</b>	2 GB	8 GB or more
<b>Graphics Card</b>	1 GB, support OpenGL 4.2	2 GB or more, support OpenGL 4.2 or higher, NVIDIA® GeForce™ GTX 1060 or AMD® Radeon™ RX 580 Series or higher
<b>Hard Disk</b>	2 GB free space in OS disk, 2 GB free space in installation disk	4 GB free space in OS disk, 2 GB free space in installation disk
<b>Resolution</b>	1024*768 VGA with True Color	1920*1080
<b>Pointing Device</b>	Mouse, trackball, or other devices	Mouse, trackball, or other devices
<b>DVD-ROM</b>	Any speed (for installation only)	Any speed (for installation only)

# How to Install



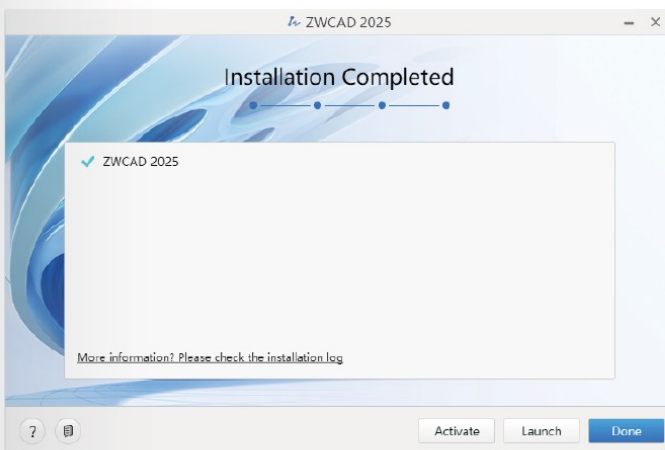
## STEP 1

Specify the installation path, and click [Continue].



## STEP 2

Swipe down to view the full text, and click [Agree and Install].



## STEP 3

Click [Activate] to launch ZWCAD and activate a license, [Launch] to launch ZWCAD, or [Done] to complete the installation.

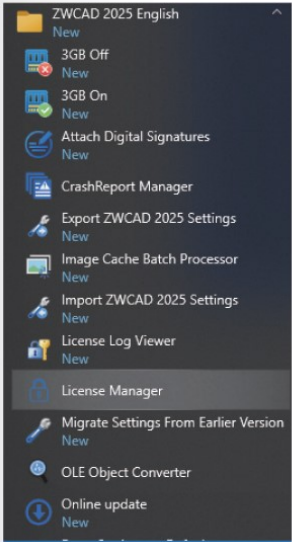
## How to Activate

XXXX-XXXX-XXXX-XXXX-XXXX-XXXX

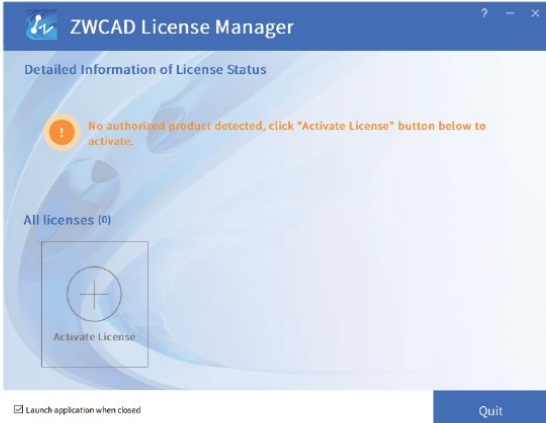
### Soft Key Activation

A 24-character license code is used to activate.

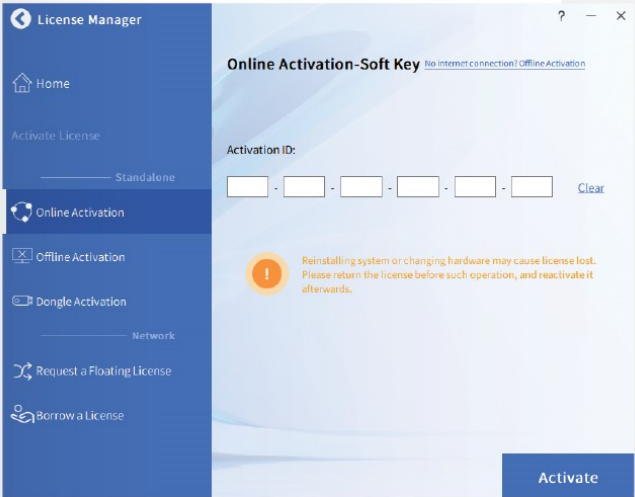
# How to Activate



**STEP 1**  
Launch **License Manager** from the Windows Start Menu.



**STEP 2**  
Click [Activate License].



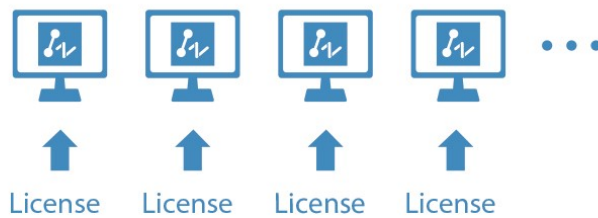
**STEP 3**

## I. With a Soft Key License

There are 2 licensing options for Soft Key license.

### Stand-alone

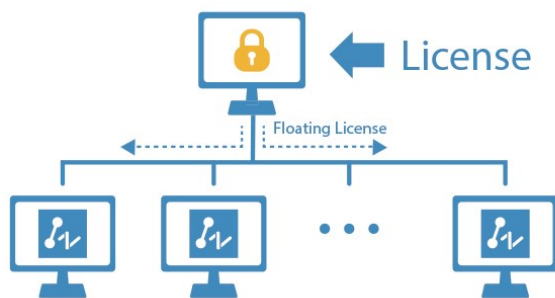
You need to activate each computer with an individual license.



Stand-alone Licensing

### Network

You need to activate the license on a server first, then come back to the client side to obtain a license from the server via a network connection.



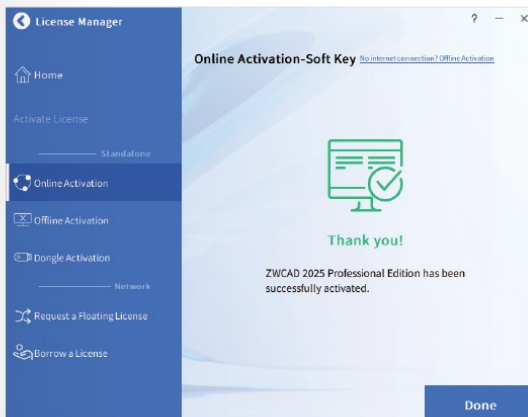
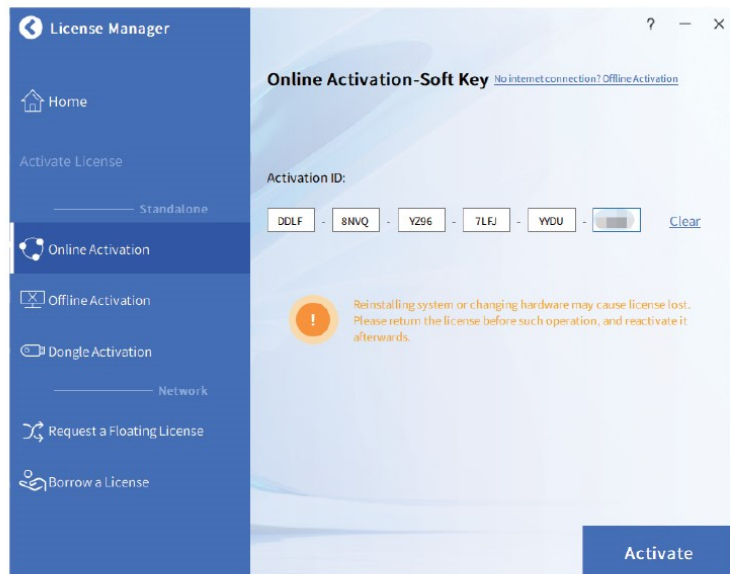
Network Licensing

## I.I Stand-alone License



### STEP 1

Click [Activate License].



### STEP 2

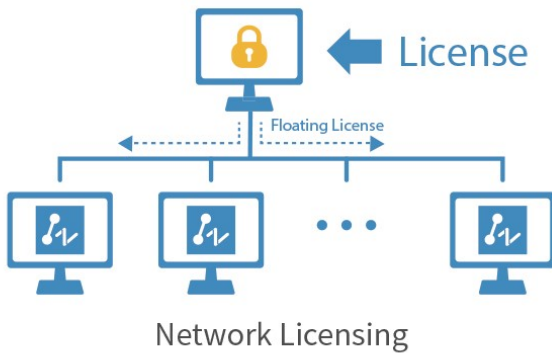
- >Click [Online Activation].
- >Fill in the license code.
- >Click [Activate].
- >You will see a success page with your license information.



The activation should be processed with Internet access. If the Internet access is limited, please choose Offline Activation and follow the guide to activate.



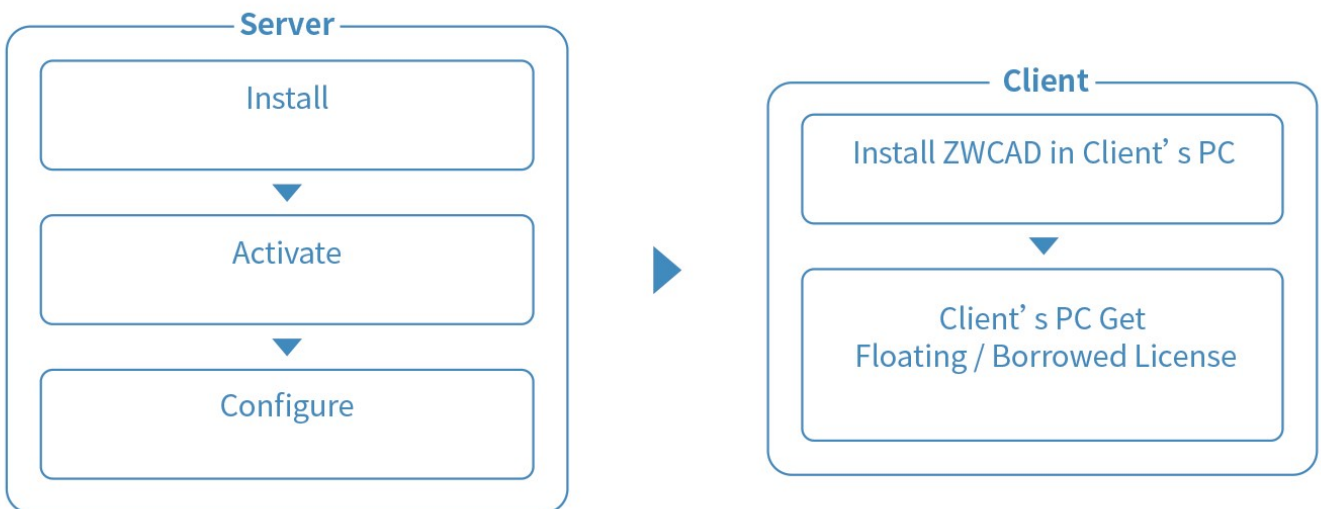
## I.II Network License



Network License means the clients get their licenses from a network server that is authorized with a ZWCAD Network License. A Network License is ideal for medium to large organizations with many users. Admin can manage licenses by allowing, limiting or reserving license seats for specific users or groups.

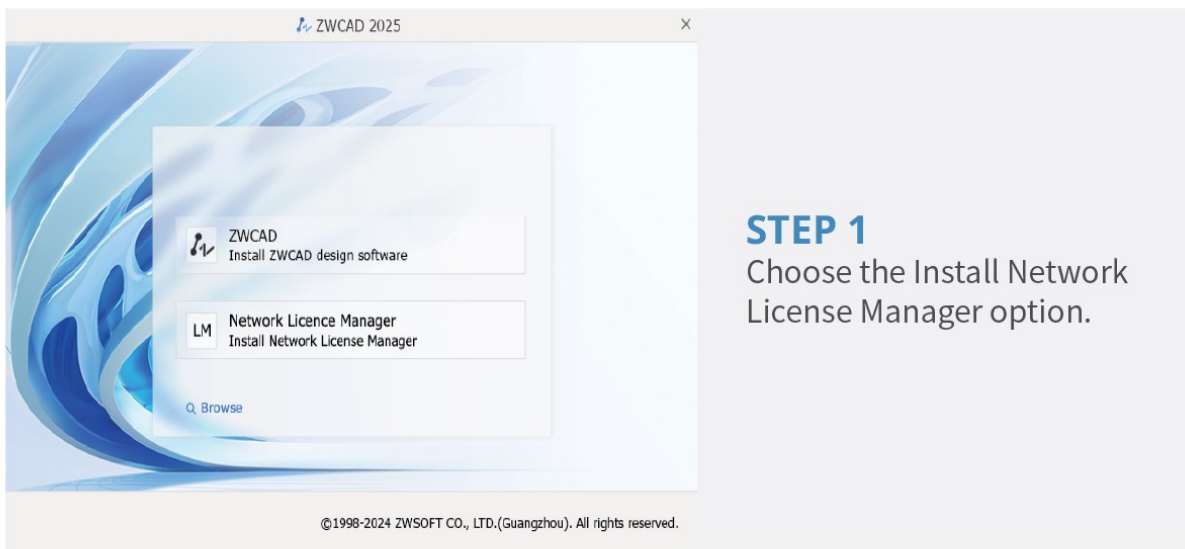
A Network License Manager (NLM) should be installed on the server and both the server and the client need to be configured to enable licensing.

Please refer to the flowchart below.





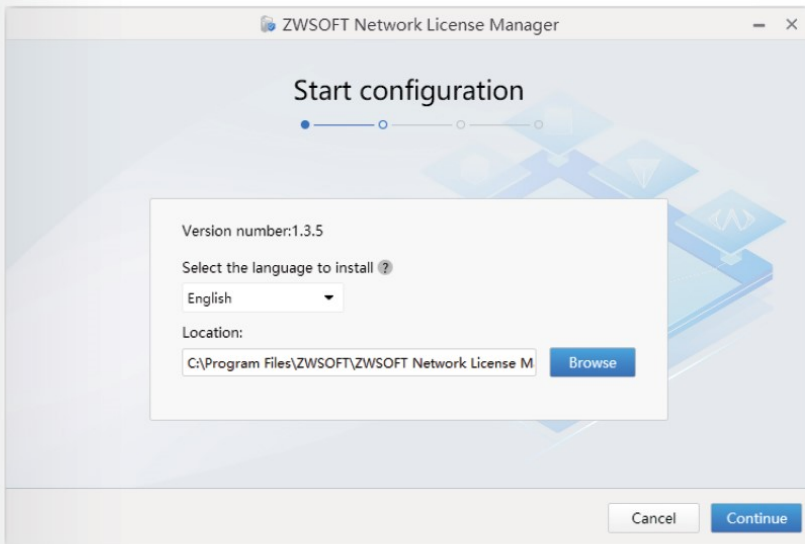
## I.II.I Install Network License Manager



### STEP 1

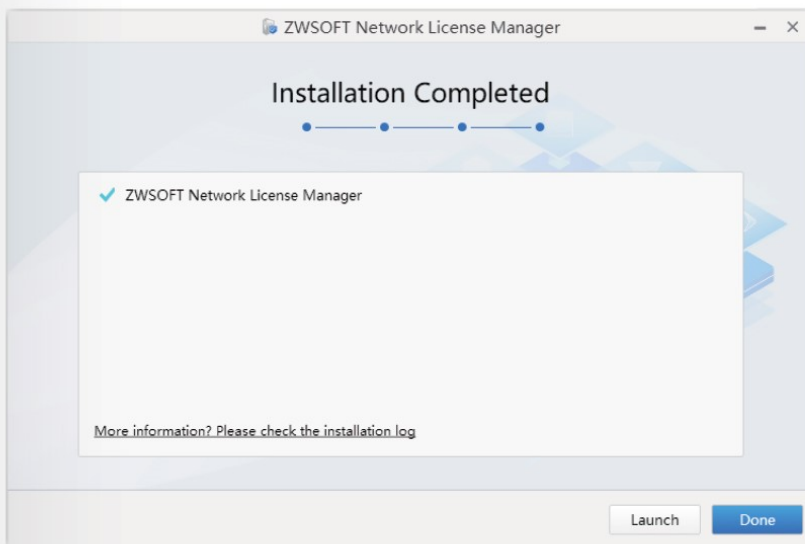
Choose the Install Network License Manager option.

## I.II.I Install Network License Manager



### STEP 2

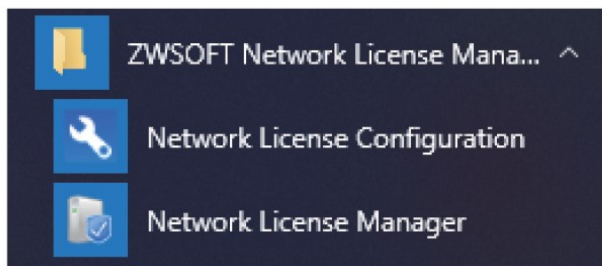
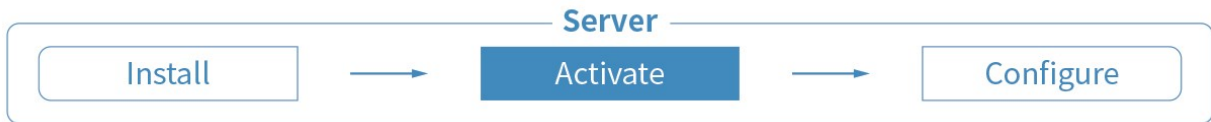
Select the language and location. Click [Continue].



### STEP 3

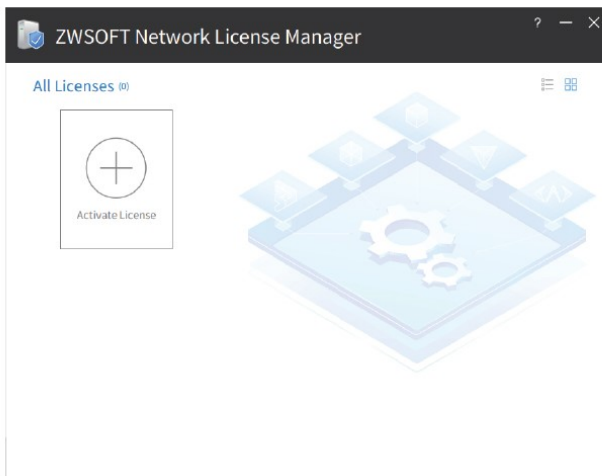
Click [Launch] when completed.

## I.II.II Activate Network License



### STEP 1

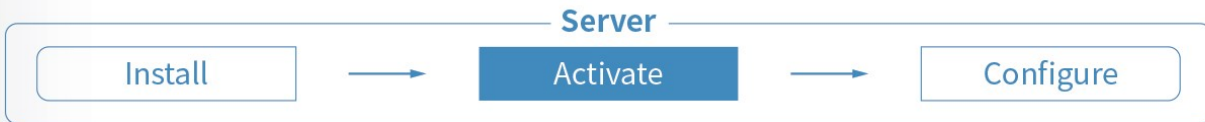
Launch the **Network License Manager** from Windows Start Menu.



### STEP 2

Click [Activate License].

## I.II.II Activate Network License



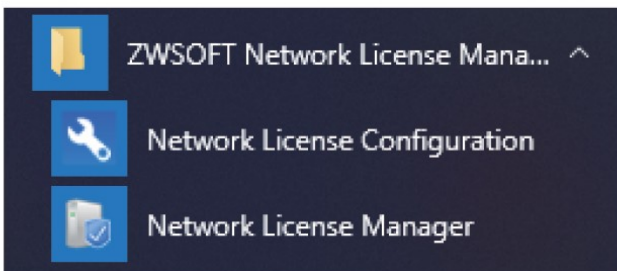
**STEP 3**

- > Fill in your license code and quantity to be used.
- > Click [Activate].
- > Click [Done] when completed.



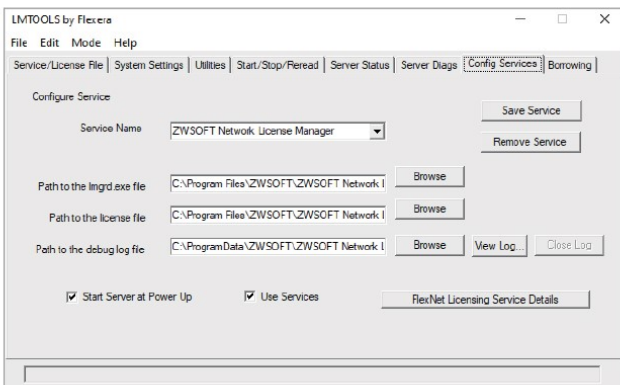
The activation should be processed within Internet access. If the Internet access is limited, please follow the Note at the bottom to go with Offline Activation.

## I.II.III Configure Network License



### STEP 1

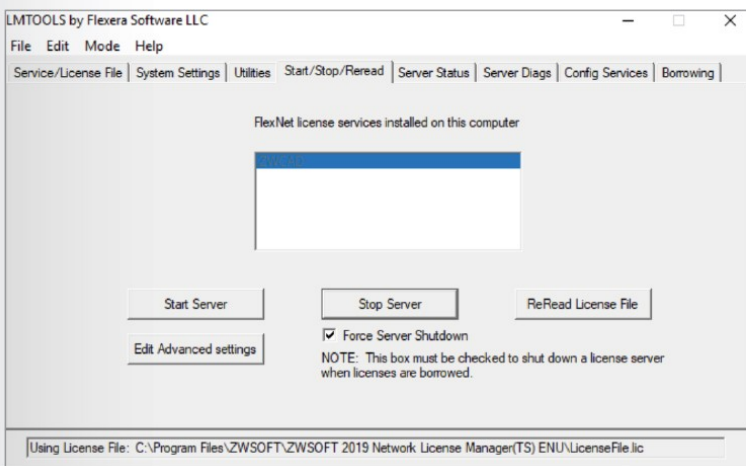
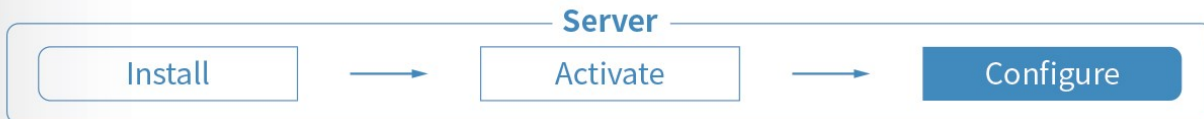
Launch the **Network License Configuration** from Windows Start Menu.



### STEP 2

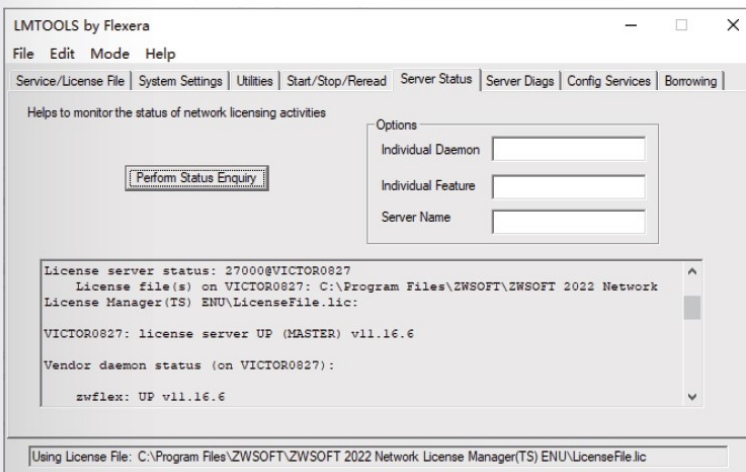
> Go to the tab **Config Services**.  
> Click [Save Service].

## I.II.III Configure Network License



### STEP 3

- > Go to the tab **Start/Stop/Reread**.
- > Click [Start Server].



### STEP 4

- > Go to the tab **Server Status**.
- > Click [Perform Status Enquiry].
- > Check the text box below to confirm the status.
- > You will see the total amount of licenses that have been issued.

## I.II.IV Floating and Borrowed License

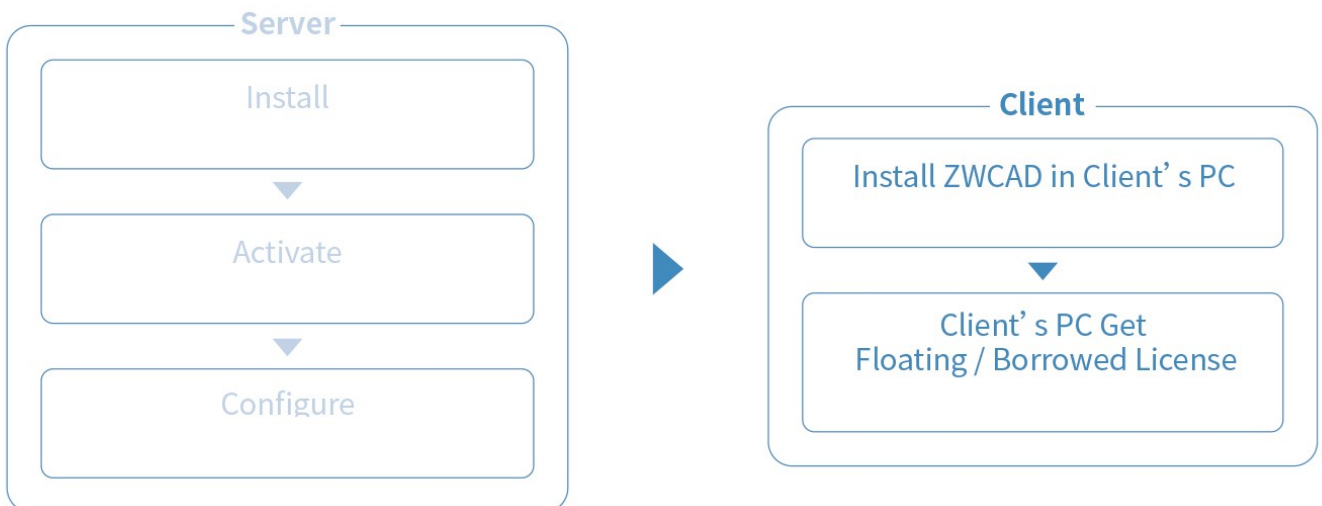
There are 2 ways to obtain license from server, which are Floating and Borrowed. You can choose one of them to activate the ZWCAD on the client side.

### **Floating:**

The client side can obtain a license from the server automatically when they start ZWCAD. The server dynamically allocates a network license, reclaims the license when the product is inactive and re-allocates it. Network connection between clients and server is always required, which is suitable for in-house working.

### **Borrowed:**

The client side can obtain a license from the server manually and store it locally for a specified period of time (maximum 180 days), so that it can still have the authorization when disconnected from the server, which is suitable for outdoor working.





## I.II.IV Floating and Borrowed License



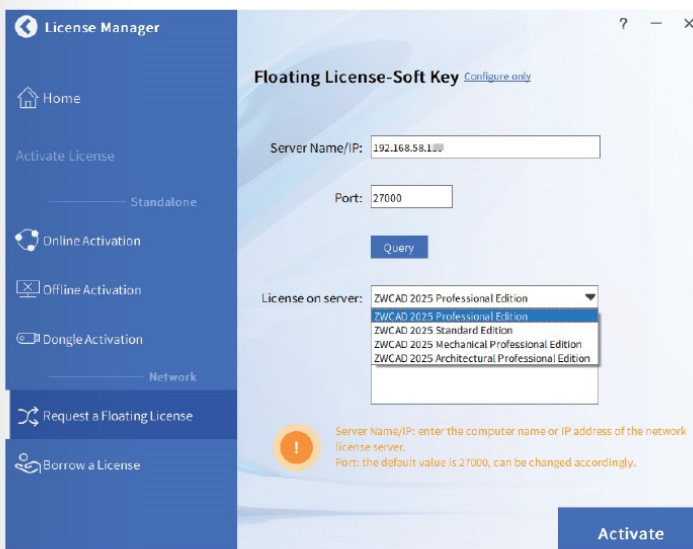
### STEP 1

Install ZWCAD

### STEP 2

Launch the license manager

Activate License



### STEP 3

- > Choose **Request a Floating License**.
- > Fill in the IP address or server name.
- > Select product version.
- > Click [Activate].

## I.II.IV Floating and Borrowed License



### STEP 1

Install ZWCAD

### STEP 2

Launch the license manager  
Activate License

The screenshot shows the 'License Manager' application window. The left sidebar contains navigation options: Home, Activate License (Standalone), Online Activation, Offline Activation, Dongle Activation (Network), Request a Floating License, and Borrow a License. The main area is titled 'Borrowed License-Soft Key' and contains the following fields and controls:

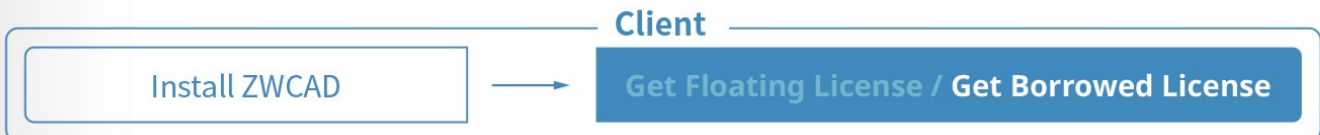
- Server Name/IP:
- Port:
- Query button
- License on server:
- Valid Thru:  |  |  |
- Activate button

A warning message at the bottom states: "Server Name/IP: enter the computer name or IP address of the network license server. Port: the default value is 27000, can be changed accordingly."

### STEP 3

- > Choose **Borrow a License**.
- > Fill in the IP address or server name.
- > Click [Query] and choose the version you need from the drop-down list below.

## I.II.IV Floating and Borrowed License



**License Manager**

Home

Activate License

Standalone

Online Activation

Offline Activation

Dongle Activation

Network

Request a Floating License

Borrow a License

**Borrowed License-Soft Key**

Server Name/IP: 192.168.58.1

Port: 27000

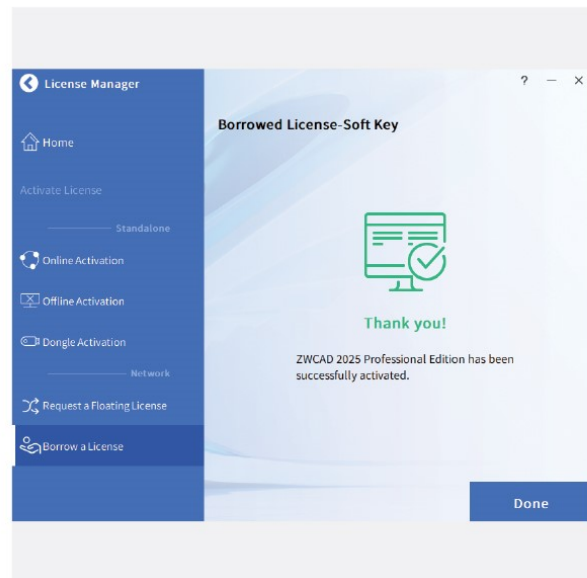
Query

License on server: ZWCAD 2025 Professional Edition

Valid Thru: 25/4/2024 | 30 Days | 90 Days | 180 Days

Server Name/IP: enter the computer name or IP address of the network license server.  
Port: the default value is 27000, can be changed accordingly.

Activate



### STEP 4

- > Specify the validity period you want to use ZWCAD on your computer (maximum 180 days).
- > Click [Activate].



Do not change the default Port value 27000, unless it has been specified.

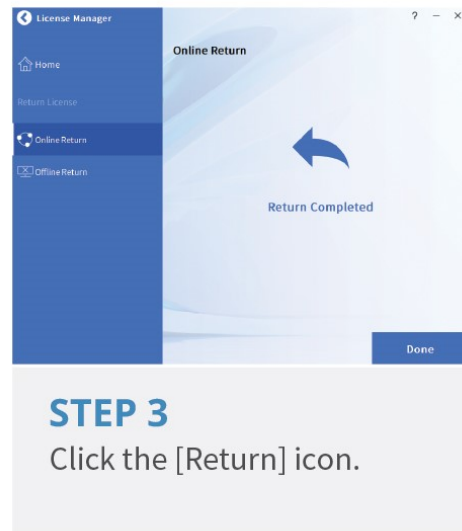
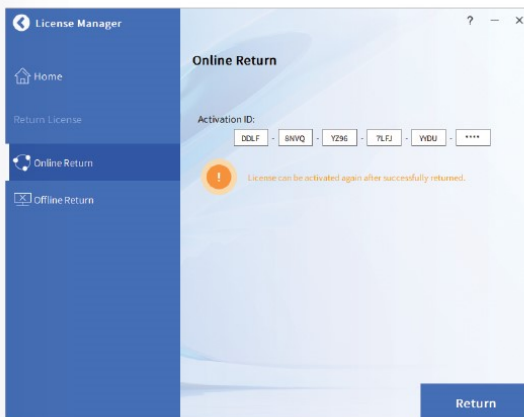
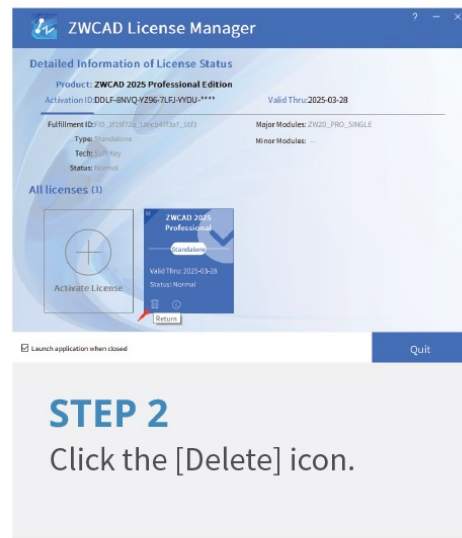
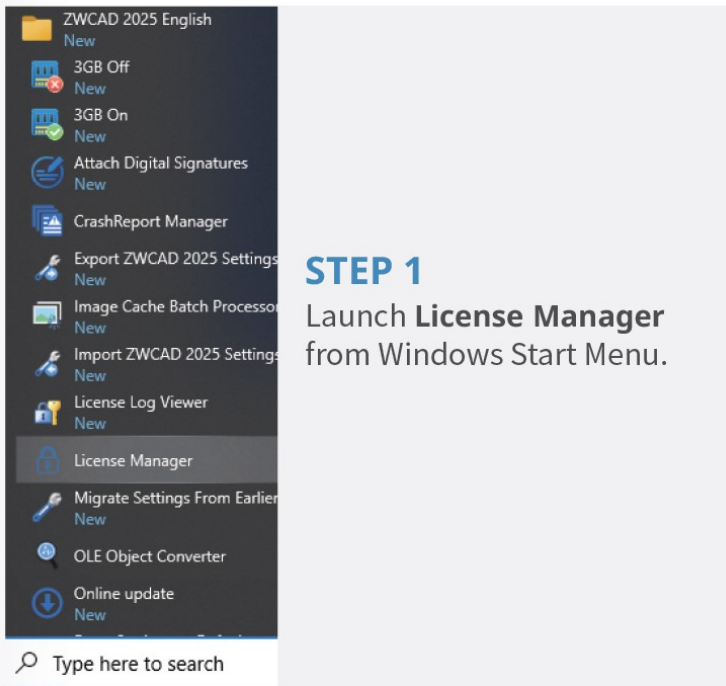
## How to Transfer Your License

If you plan to install your current ZWCAD onto another computer or have to do it because of a software or hardware change, e.g. replacing or reformatting a system hard drive, you need to transfer your license(s).



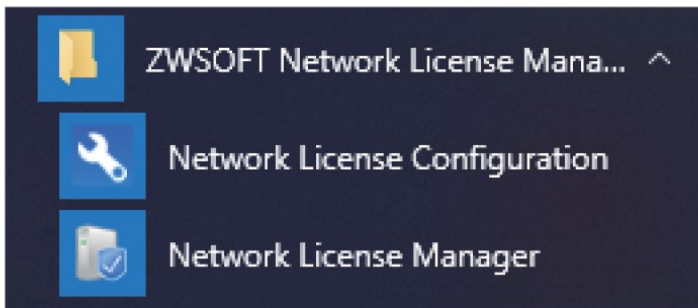
To transfer, you can deactivate your current license on client side, or on server, then activate it again on any new computer.

# I. Deactivation - ZWCAD



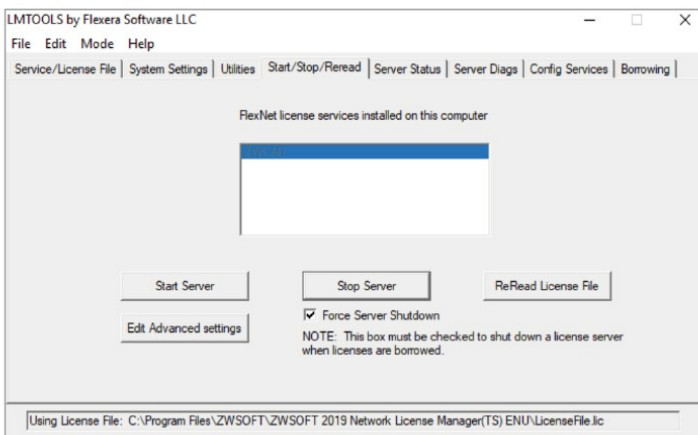
The deactivation should be processed with Internet access. If the Internet access is limited, please choose Offline Return then follow the guide to deactivate.

## II. Deactivation – Network License Manager



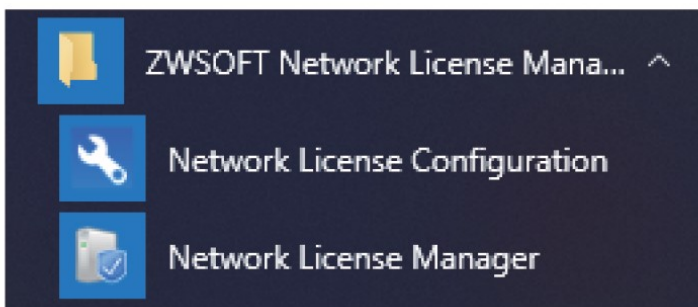
### STEP 1

Launch the **Network License Configuration** from Windows Start Menu.



### STEP 2

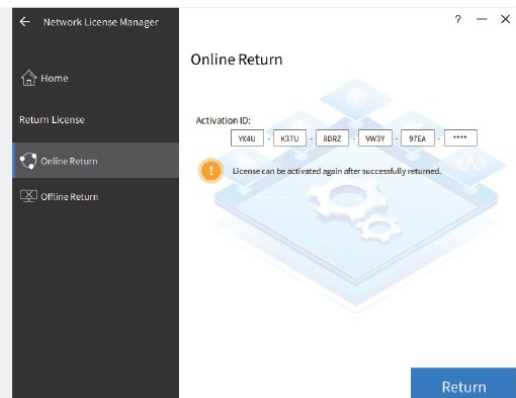
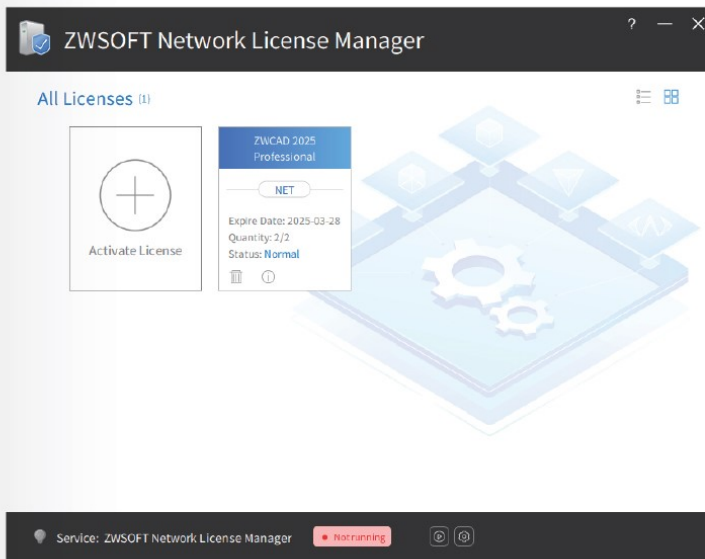
- > Go to the tab **Start/Stop/Reread**.
- > Check **Force Server Shutdown**.
- > Click [Stop Server].



### STEP 3

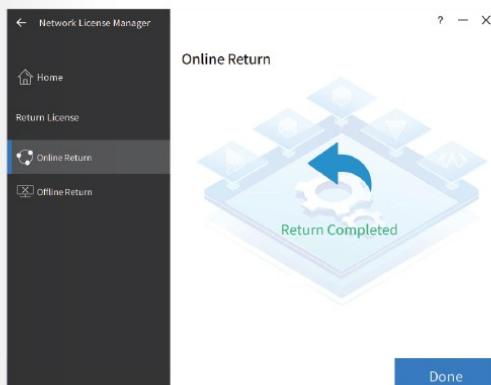
Launch the **Network License Manager** from Windows Start Menu.

## II. Deactivation – Network License Manager



### STEP 4

- > Click the “” icon.
- > Click [Return].



### STEP 5

Click [Done] when completed.



The deactivation should be processed with Internet access. If the Internet access is limited, please choose the Offline way then follow the guide to deactivate.

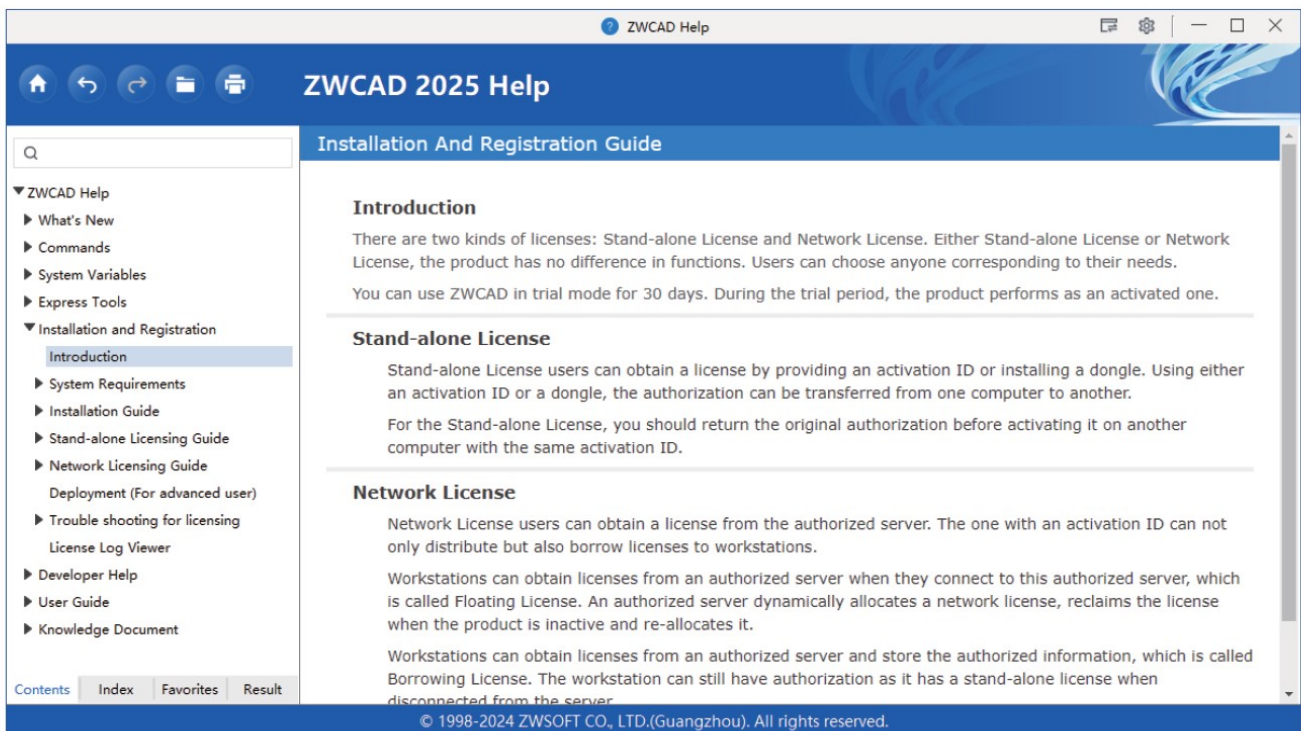


## Learn More

If you want to learn more about Installation and Activation, please launch ZWCAD then press F1 or input Help to open the Help system.

You can find the Installation and Registration Guide from the menu on the left side, or visit:

[www.zwsoft.com/support/zwcad-instruction-installation](http://www.zwsoft.com/support/zwcad-instruction-installation)





**ZWSOFT**

📍 32/F, Pearl River Tower, No.15, Zhujiang West Road, Tianhe District, Guangzhou, China, 510623

☎ +86-20-38289780

📠 +86-20-38288676

✉ sales@zsoft.com

🌐 www.zsoft.com

🌍 China | Indonesia | France | Germany | Japan | Malaysia | Mexico | Saudi Arabia | Thailand | UAE | US | Vietnam